

## SJ80-811

LOWER BRACKET



### DESCRIPTION

Fixing bracket used to fix screwjack opener to outer frame.

### COMPATIBLE WITH

- SJ135-OH
- SJ154-TOH

### TECHNICAL DATA

Colour	Mill Finish
Delivery Includes	1 x Bracket

### COLOURS

- Mill Finish

### PART CODES

SJ80-811 - SJ80-811 Lower Bracket

## SJ80-7910

UPPER BRACKET



### DESCRIPTION

Fixing bracket used to fix screwjack opener to opening vent.

### COMPATIBLE WITH

- SJ135-OH
- SJ154-TOH

### TECHNICAL DATA

Colour	Mill Finish
Delivery Includes	1 x Bracket

### COLOURS

- Mill Finish

### PART CODES

SJ80-7910 - SJ80-7910 Upper Bracket

## SJ80-83111

LOWER BRACKET



### DESCRIPTION

Fixing bracket used to fix screwjack opener to outer frame.

### COMPATIBLE WITH

- SJ135-OH
- SJ154-TOH

### TECHNICAL DATA

Colour	Mill Finish
Delivery Includes	1 x Bracket

### COLOURS

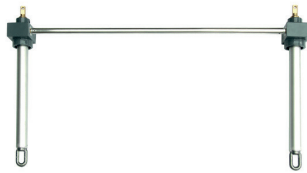
- Mill Finish

### PART CODES

SJ80-811 - SJ80-811 Lower Bracket

## SJ160

### TANDEM CONNECTING BAR



#### DESCRIPTION

Tandem connecting bar used to connect 2 x SJ154-TOH screwjack openers together on larger windows.

#### COMPATIBLE WITH

- SJ154-TOH

#### TECHNICAL DATA

Colour	Mill Finish
Delivery Includes	1 x Tandem Bar

#### COLOURS

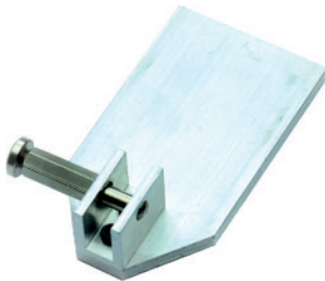
● Mill Finish

#### PART CODES

SJ160-1000	- SJ160 Tandem Connecting Bar 1000 mm
SJ160-1250	- SJ160 Tandem Connecting Bar 1250 mm
SJ160-1500	- SJ160 Tandem Connecting Bar 1500 mm
SJ160-2000	- SJ160 Tandem Connecting Bar 2000 mm

## SJ169

### UPPER BRACKET



#### DESCRIPTION

Fixing bracket used to fix screwjack opener to opening vent.

#### COMPATIBLE WITH

- SJ135-OH  
- SJ154-TOH

#### TECHNICAL DATA

Colour	Mill Finish
Delivery Includes	1 x Bracket

#### COLOURS

● Mill Finish

#### PART CODES

SJ169	- SJ169 Upper Bracket
-------	-----------------------

## SJ169-236

### UPPER BRACKET



#### DESCRIPTION

Fixing bracket used to fix screwjack opener to opening vent.

#### COMPATIBLE WITH

- SJ135-OH  
- SJ154-TOH

#### TECHNICAL DATA

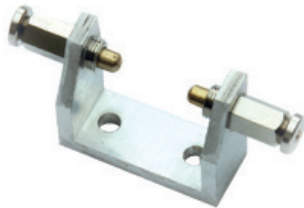
Delivery Includes	1 x Bracket
-------------------	-------------

#### PART CODES

SJ169-236	- SJ169-236 Upper Bracket
-----------	---------------------------

## SJ170-236

LOWER BRACKET



### DESCRIPTION

Fixing bracket used to fix screwjack opener to outer frame..

### COMPATIBLE WITH

- SJ135-OH  
- SJ154-TOH

### TECHNICAL DATA

Colour	Mill Finish
Delivery Includes	1 x Bracket

### COLOURS

● Mill Finish

### PART CODES

SJ170-236 - SJ170-236 Lower Bracket

## SJ173

UPPER BRACKET



### DESCRIPTION

Fixing bracket used to fix screwjack opener to opening vent.

### COMPATIBLE WITH

- SJ135-OH  
- SJ154-TOH

### TECHNICAL DATA

Colour	Mill Finish
Delivery Includes	1 x Bracket

### COLOURS

● Mill Finish

### PART CODES

SJ173 - SJ173 Upper Bracket

## SJ192

UPPER BRACKET



### DESCRIPTION

Fixing bracket used to fix screwjack opener to opening vent.

### COMPATIBLE WITH

- SJ135-OH  
- SJ154-TOH

### TECHNICAL DATA

Colour	Mill Finish
Delivery Includes	1 x Bracket

### COLOURS

● Mill Finish

### PART CODES

SJ192 - SJ192 Upper Bracket

## SJ198

UPPER BRACKET



### DESCRIPTION

Fixing bracket used to fix screwjack opener to opening vent.

### COMPATIBLE WITH

- SJ135-OH
- SJ154-TOH

### TECHNICAL DATA

Colour	Mill Finish
Delivery Includes	1 x Bracket

### COLOURS

- Mill Finish

### PART CODES

SJ198	-	SJ198 Upper Bracket
-------	---	---------------------

## SJW80G

UPPER BRACKET



### DESCRIPTION

Fixing bracket used to fix screwjack opener to opening vent.

### COMPATIBLE WITH

- SJ135-OH
- SJ154-TOH

### TECHNICAL DATA

Colour	Mill Finish
Delivery Includes	1 x Bracket

### COLOURS

- Mill Finish

### PART CODES

SJW80G	-	SJW80G Upper Bracket
--------	---	----------------------