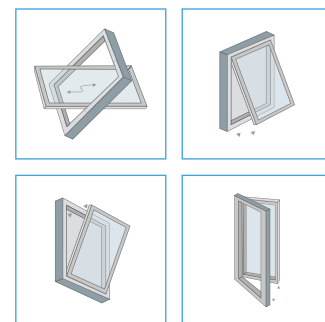


WMU 836 ACTUATOR

ACTUATORS CHAIN ACTUATORS



■ Applications



■ Colours

Silver Anodised



■ WMU 836 ACTUATOR

- Programmable single chain actuator.
- Actuator can be programmed to required opening speed and opening stroke.
- Available as a single, double, triple or quad synchro actuator.
- The risk of entrapment is reduced as the actuators are programmed to reverse if they encounter obstacles when closing.
- Approved according to EN 12101-2 with selected profiles.
- All brackets supplied separately.

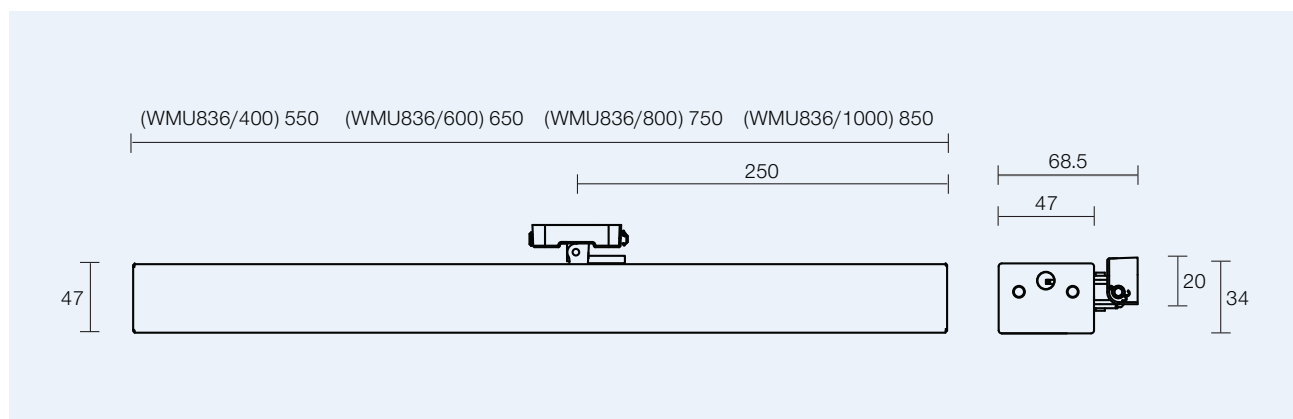


24V

TECHNICAL DATA:

CODE	WMU836
VOLTAGE	24VDC
STROKE	400 / 600 / 800 / 1000mm
THRUST FORCE	300N
ABSORBED CURRENT	1A
SPEED	11 - 14mm/s
PROTECTION CLASS	IP32
FLEX	5m (3 CORE)
COLOURS	SILVER ANODISED
LIMIT STOP	ELECTRONIC
SAFETY STOP	ELECTRONIC
MAX WINDOW WIDTH	<1.5m

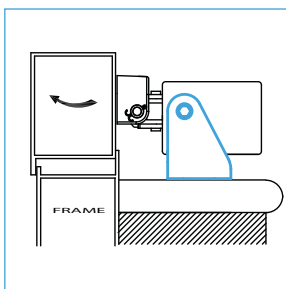
DIMENSIONS:



BRACKET TYPES:

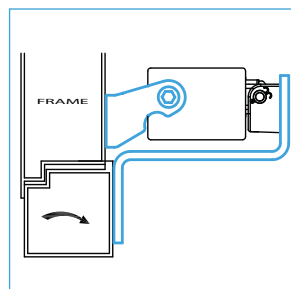
WAB836A

Small Pivot Bracket



WAB825

Bottom Hung Bracket



WAB836B

Large Pivot Bracket

